

WiFi Configuration

For *PRECISE-LOG*

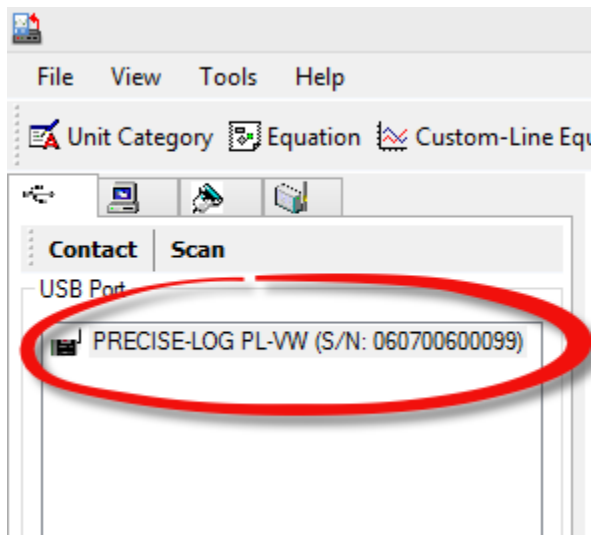
Please refer to **Quick Start Instructions** for basic SiteView installation and communications.

This documentation demonstrates how to configure WiFi connection for PRECISE-LOG data logger for the first time.

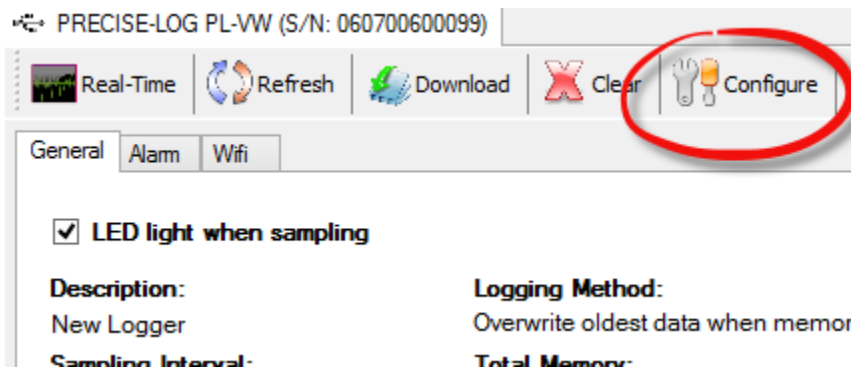
Please note the WiFi function of the logger only works when the logger was powered by an external power supply. If the logger is powered by its on-board battery the WiFi function is disabled.

1. Open Configuration Dialog

With the PRECISE-LOG data logger plugged in a USB port of the computer, open SiteView and double click the logger icon:

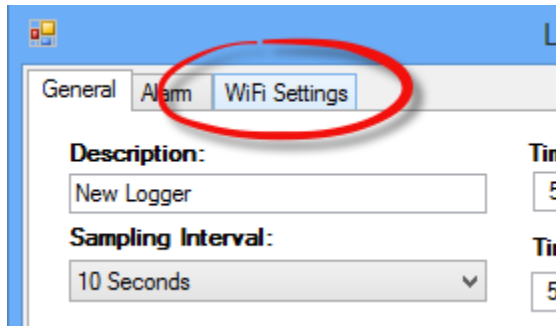


In the logger status window, click “Configure” button:

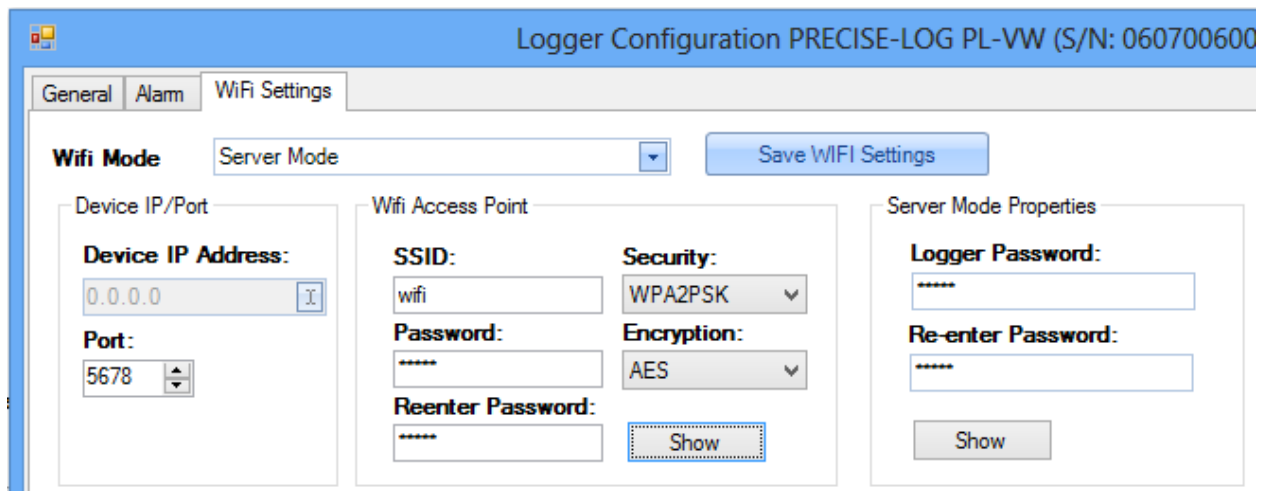


2. Configure WIFI Settings

In the Configuration Dialog, click “WIFI Settings”:



The below section shows:



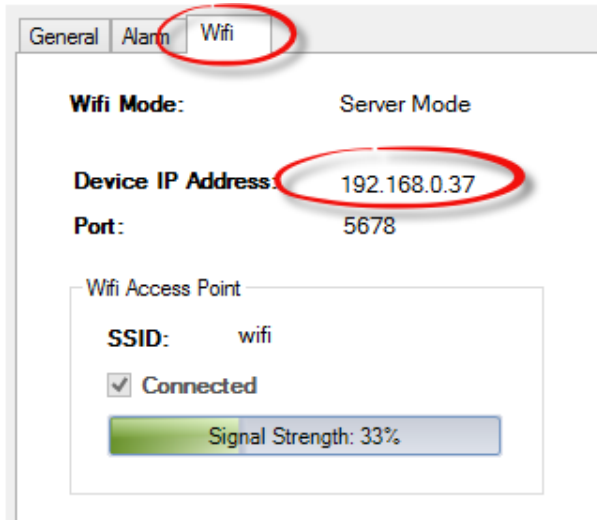
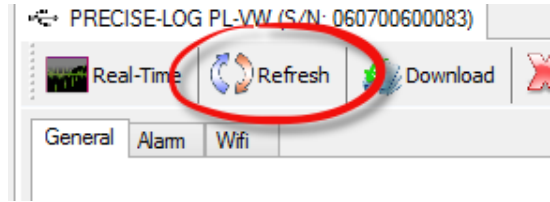
Change the WIFI Mode to “Server Mode”,
Enter your WIFI network’s access point id in SSID section.
Enter the password for the access point in both “Password” and “Reenter Password” fields.
Choose the security mode and the encryption of your WIFI network.

Keep all other fields default. And click “Save WIFI Settings” button to let the logger connect to the network.
(this button only saves WIFI related settings to the logger)

Notice the LED on the logger starts blinking in amber until it accessed the network successfully.

If you want to configure the logger with a new session, you may click “OK” button to clear the data in the logger and force logger starts logging. Otherwise, click “Cancel” to close the dialog.

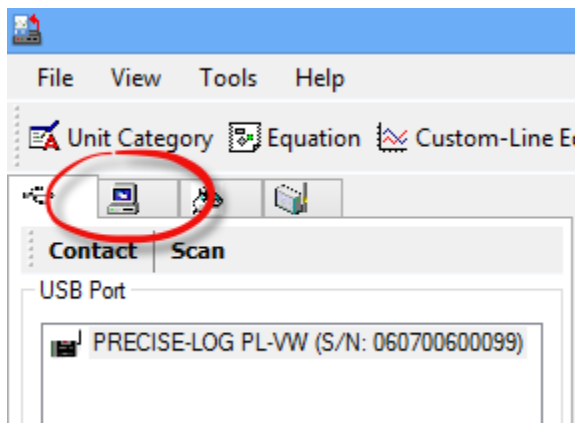
In the status window of the logger click “Refresh” button and then click “Wifi” tab, the below WIFI status indicates if the logger connects to the WIFI network as well as the IP address assigned to the logger.



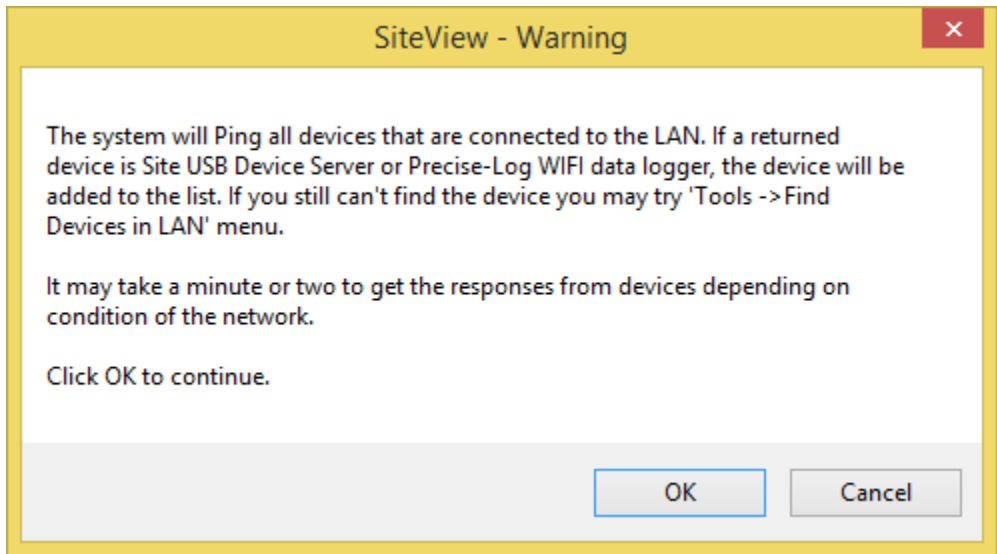
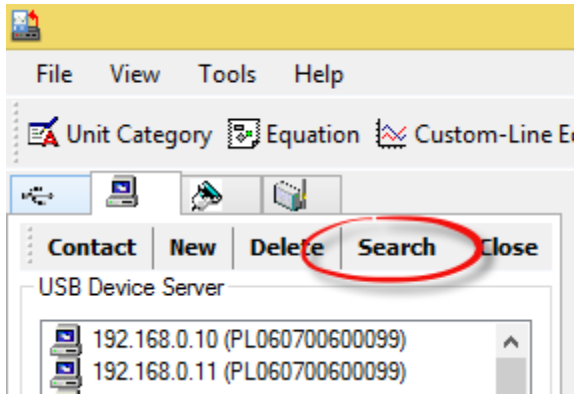
3. Access Logger Remotely

Plug the logger to the enclosed USB wall adapter, wait until the logger stopped blinking in amber. (Logger keeps blinking in amber indicating it has not joined the network)

Go back to SiteView and click “USB Device Server” tab:



Click “Search” button and click “OK” button to continue.



SiteView will search for PRECISE-LOG data loggers and the found ones will be added to the list automatically.

