



**Quick Start**  
for Site USB Device Server Pro  
DSP-1

Please refer to the instructions of SiteView, SiteView-Web and Pluto for basic communication with a USB Device Server.

## 1. Unbox DSP-1

DSP-1 comes with an USB cable. Please:

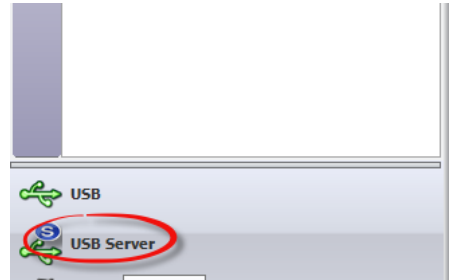
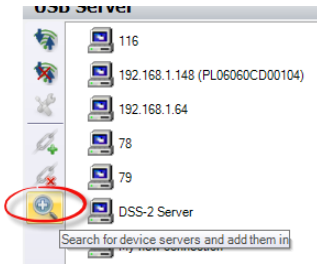
- ❖ Connect DSP-1 to a 5VDC power supply via the enclosed USB cable.
- ❖ Connect DSP-1 to your local network with an Ethernet cable.
- ❖ Connect data loggers to the USB ports of DSP-1.
- ❖ Wait for TWO minutes. This will allow the system to recognize the plugged data logger(s).



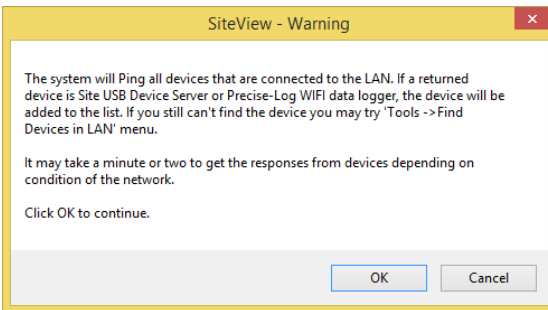
## 2. Find DSP-1 and Create Connection from SiteView

Launch SiteView software in PC side and click "USB Server" tab:

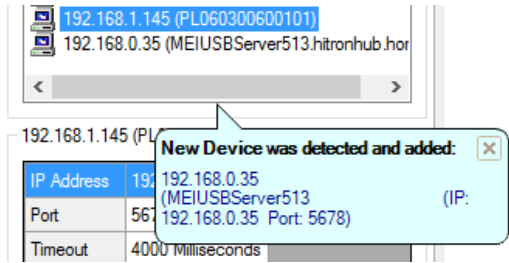
Click "Search" button:



In the pop-up dialog click "OK" button to continue.

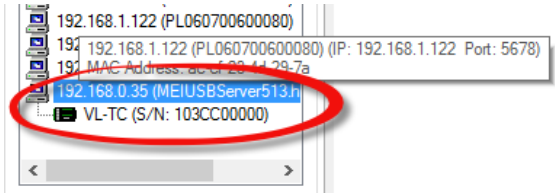


SiteView will search for Site USB Device Servers under the same network and the found ones will be added to the list automatically.



### 3. Communicate with Remote Data Logger

Double click the new created connection; the data logger icon will be listed under it:



Double click the logger icon to show the status. Now you can download data, view real-time readings and more...

If the above method can't find the Device Server, you can click **Others -> Find Device in LAN** button to find the IP address of the Device Server based on its MAC address which is printed on the board.

### 4. Change Access Settings from Admin Portal

In the above steps, we assume DSP-1's settings are: Port: 5678, Password: 12345.

You can change these default settings from the admin's portal web page by entering the admin's address in the address box of a web browser:

http://[IP Address of the DSP-1]:8864

Enter 'admin' for both the Username and the Password.

Please sign in

Sign in

Scroll down to 'USB Device Server Properties' panel and change any of the below settings.

IP Address	Port	Password
192.168.1.95	5678 <a href="#">Change</a>	***** <a href="#">Change</a>

If you have changed the above settings for a DSP-1 and you want to communicate with it from SiteView, SiteView-Web or Pluto, you must use the same settings when you create a connection for it.

**Microedge Instruments Inc.**

404 – 1688 152nd Street

Surrey, BC

Canada, V4A 4N2

Toll Free: 1.877.352.9158,

Fax: 778.807.5098

[www.microedgeinstruments.com](http://www.microedgeinstruments.com)

[info@microedgeinstruments.com](mailto:info@microedgeinstruments.com)