



Quick Start

For SMART-HUB
(SMH-1)

Please refer to the instructions of SiteView, SiteView-SDK, SiteView-Web and Pluto for basic communication with a USB Device Server which is part of Smart-Hub functionalities.

1. Unbox Smart-Hub

Smart-Hub comes with

1. 5VDC Power Adapter
2. USB Cable
3. Ethernet Cable

Please



- ❖ Connect Smart-Hub to the 5VDC power adapter via the enclosed USB cable.
- ❖ Connect Smart-Hub to your local network with the enclosed Ethernet cable.
- ❖ Connect data loggers to the USB ports of Smart-Hub
- ❖ Wait for TWO minutes. This will allow the system to recognize the plugged data logger(s).

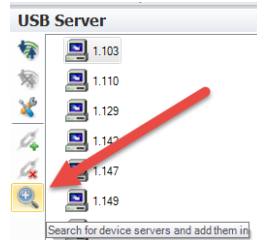
2. Access Device's Admin Portal

Please note: the following steps require SiteView 4.4.6 or newer version to work correctly.

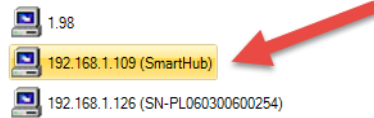
Inside SiteView, click the 'Search' button under USB Server comm panel:

The system should find the Smart-Hub and insert a Connection under the USB Server:

IP	MAC	S/N	Firmware
192.168.1.109	62af622cfede	8765774808355..	1.0.5
192.168.1.215	ACCF23A4811E	PL060800600110	Unknown
192.168.1.253	d270c1edc522	9fc44be49e3799...	1.1.2



Take a note of the IP address of the newly created connection:



Open a web browser and enter: [http://\[IP address of the connection\]:8864](http://[IP address of the connection]:8864)

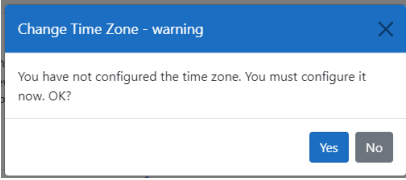
Enter 'admin' for both the Username and the Password.

Please sign in

Sign in

3. Change the System's Time Zone

You will need to change the Time Zone of the system. When you see the pop-up for this, please select a correct time zone.



After changing the time zone, the system will reboot. Please wait for three minutes before refreshing the page.

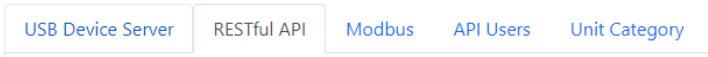
4. Communicate with remote data loggers from SiteView

Please refer to the Quick Start of DSP-2C for details:

<https://www.microedgeinstruments.com/documents/DSP-2CQuickStart.pdf>

5. Other Functionalities

In the home page, you can visit each tab to view details of each function:



For “RESTFul API” click below link under “RESTFul API” tab for the complete documents about all the end points:

visit this link: [RESTful API Documents](#)



The system already created ‘apiuser1’ for you and you can use this user to login to the Web API endpoint and start using those endpoints.

Microedge Instruments Inc.

404 – 1688 152nd Street

Surrey, BC

Canada, V4A 4N2

Toll Free: 1.877.352.9158

Fax: 778.807.5098

www.microedgeinstruments.com

info@microedgeinstruments.com